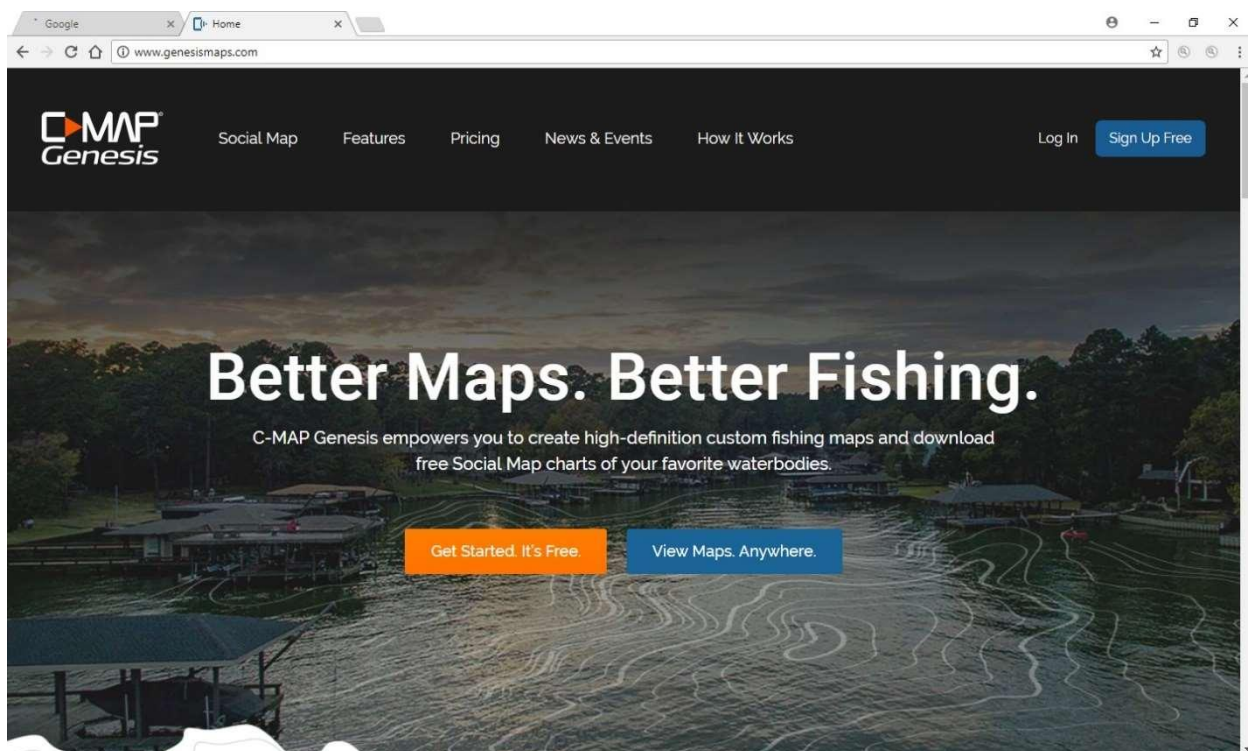


How to Create a CMAP Genesis Account, Download Maps and View on your Lowrance – by Dan Swanson

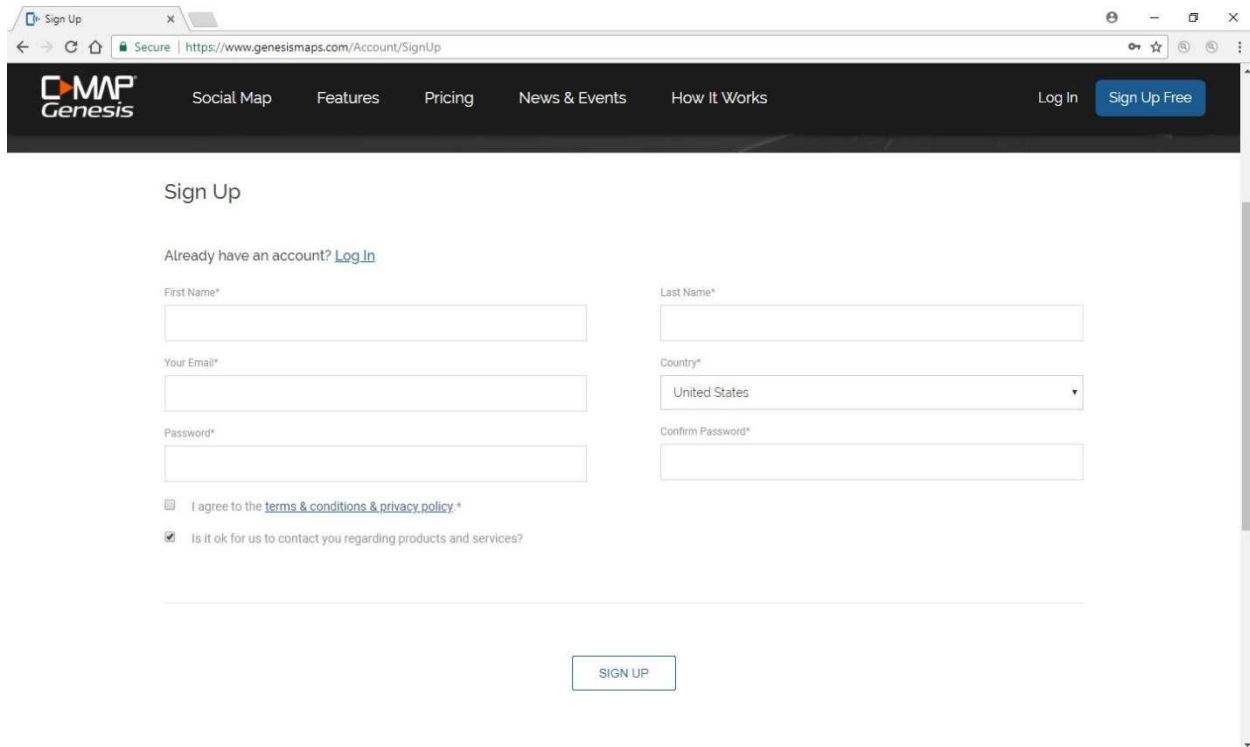
Lowrance’s CMAP Genesis social maps allow those of us in areas that don’t have good lake maps to participate in community mapping efforts which will, over time, create quality maps of our lakes. This quick article will show you step-by-step how to do it.

Set up an account

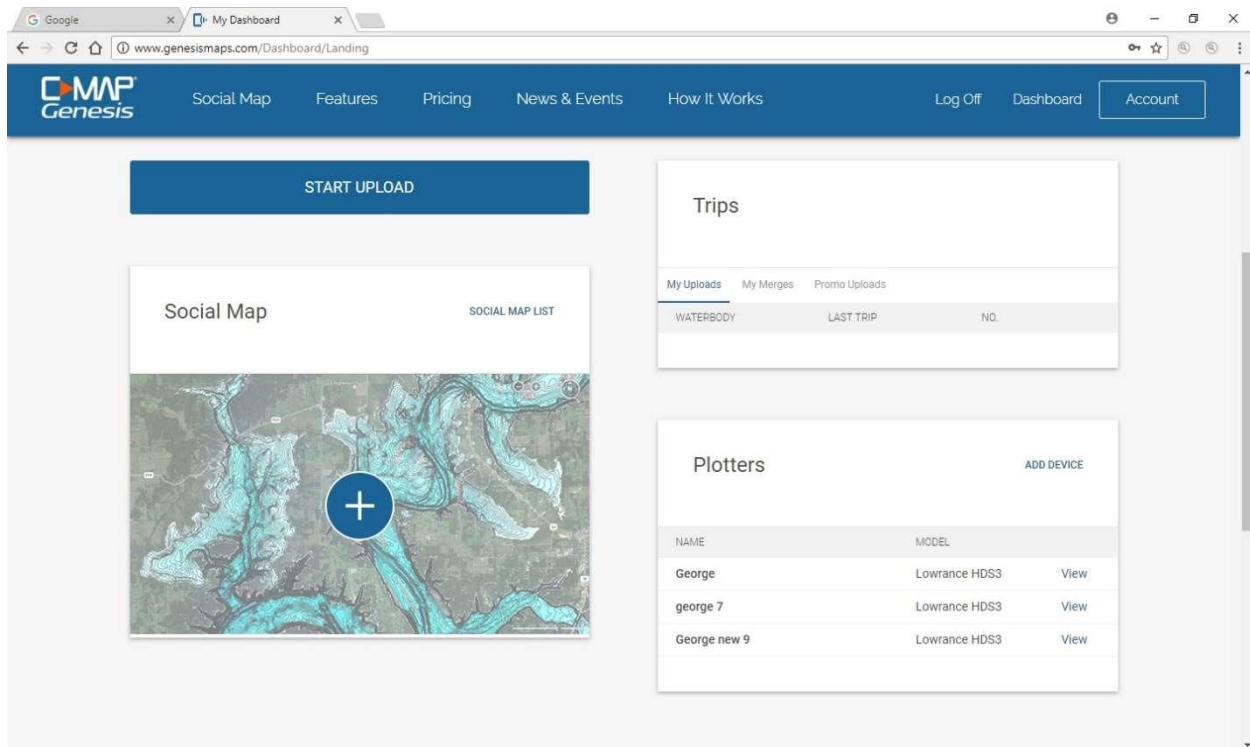
Using your browser (I used Chrome for these examples but Windows Explorer also works) go to www.genesismaps.com.



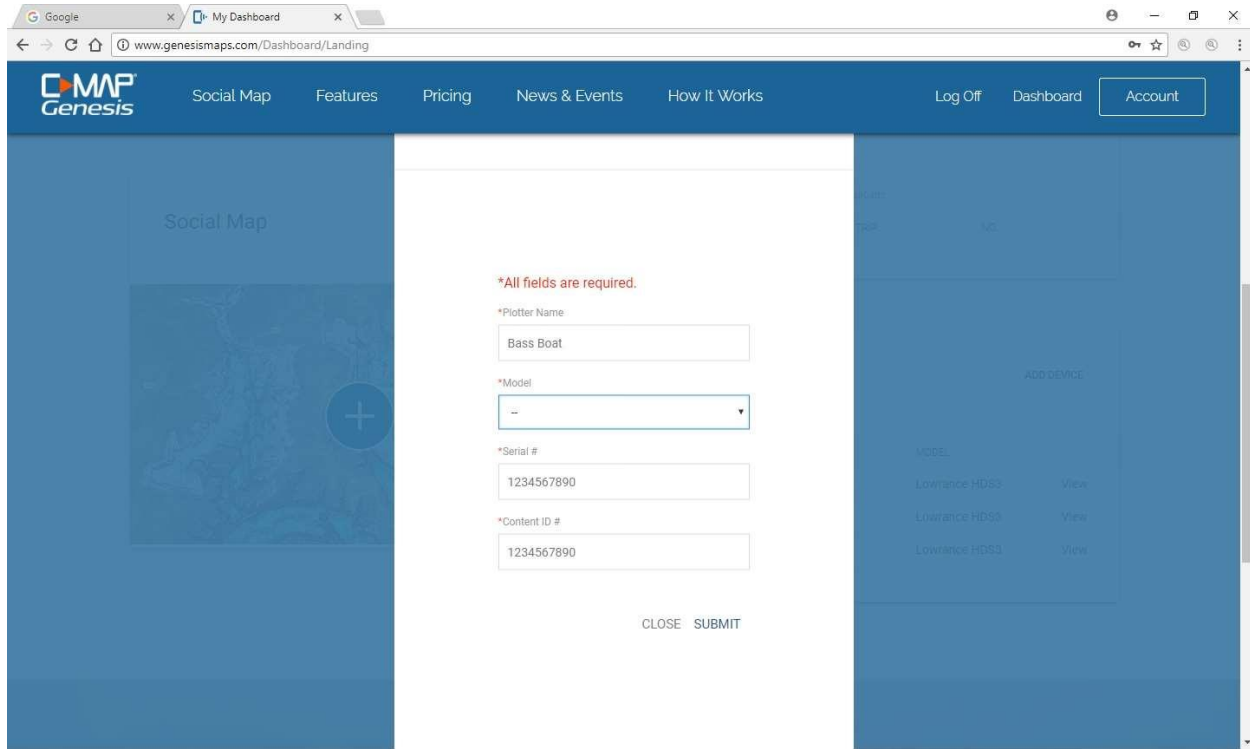
Click on “Get Started It’s Free.” It will take you to the following page.



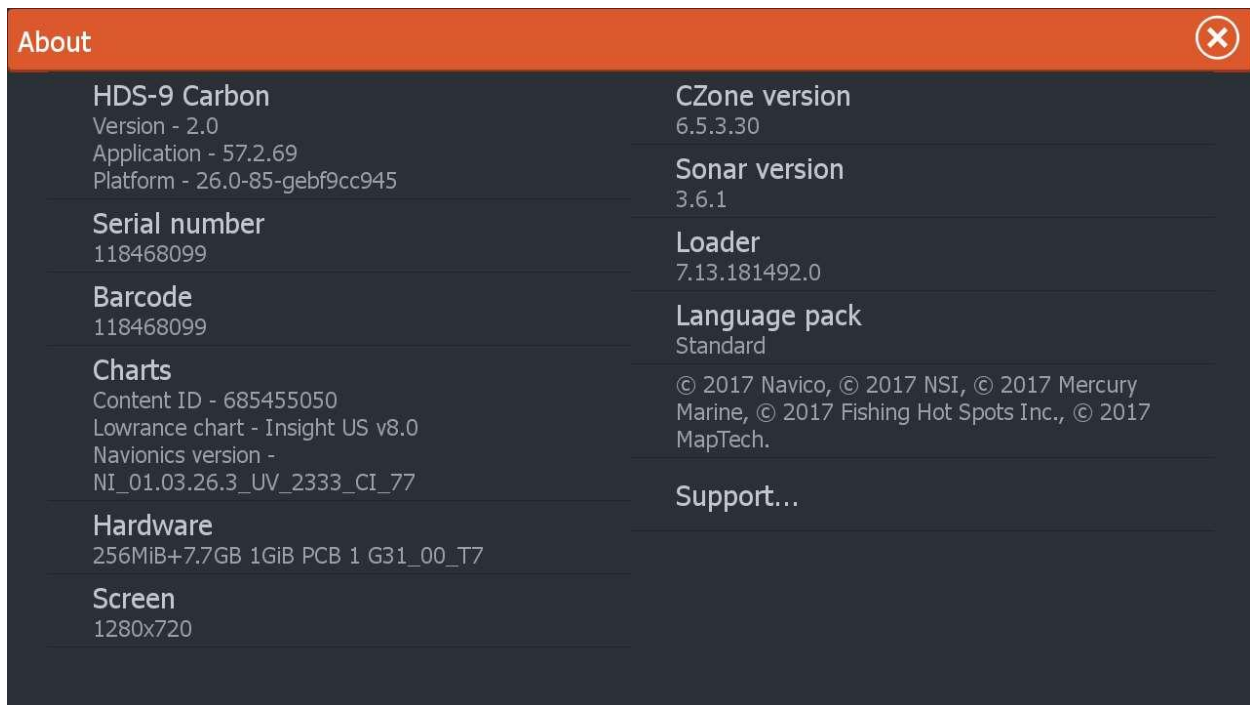
Fill in the blanks to set up your login. Once you've logged in it will look like this.



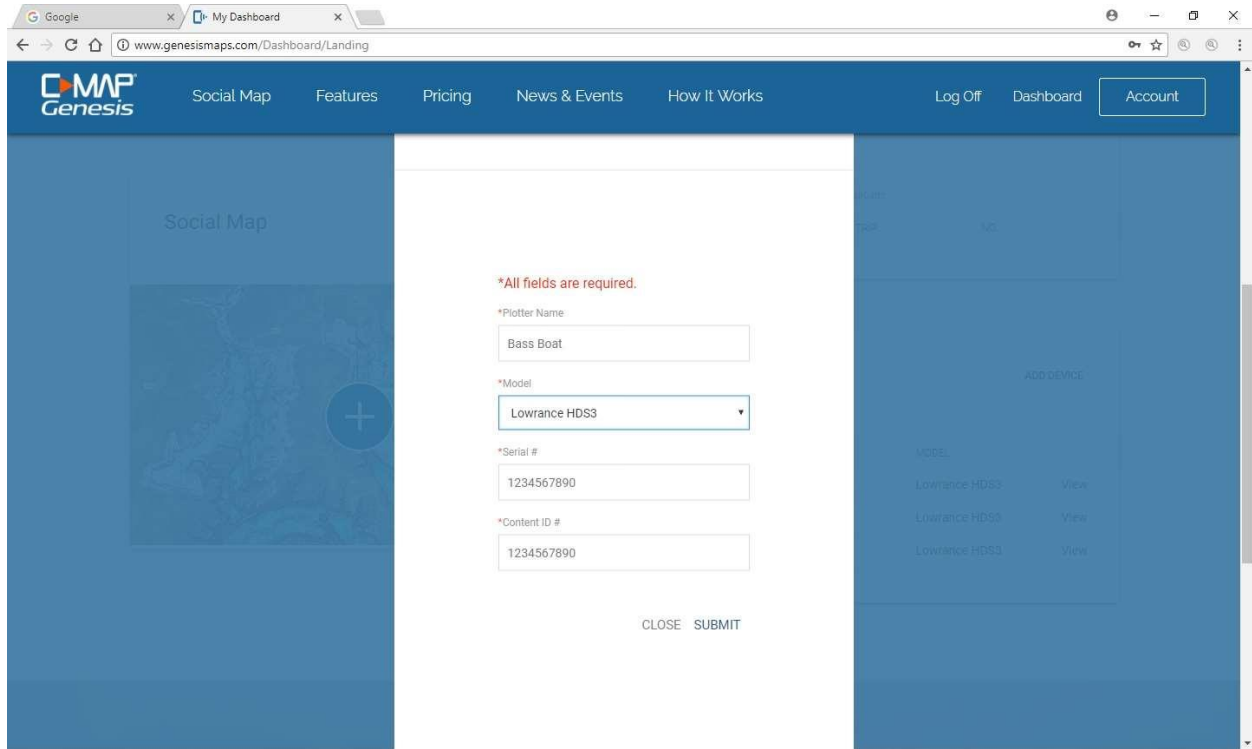
You will need to set up a plotter. Click on "ADD DEVICE"



Select the model number of your Lowrance from the list. Next you will need to get the serial number and Content ID from your Lowrance. On all Lowrance units it is found under Settings-System-About.

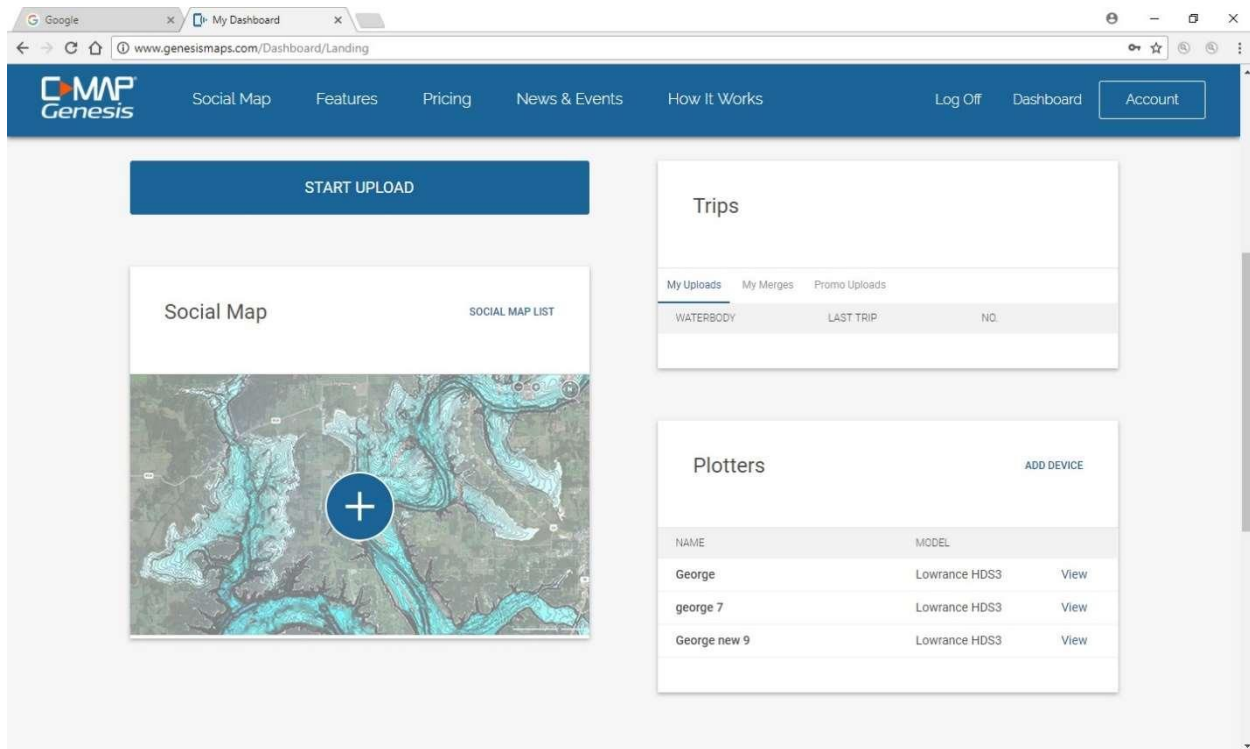


Enter the serial number and content ID exactly as they are shown. It's important that if there are alphabetic characters in the content ID and they are capitalized, they must be entered in the same way.



How to Get a Social Map

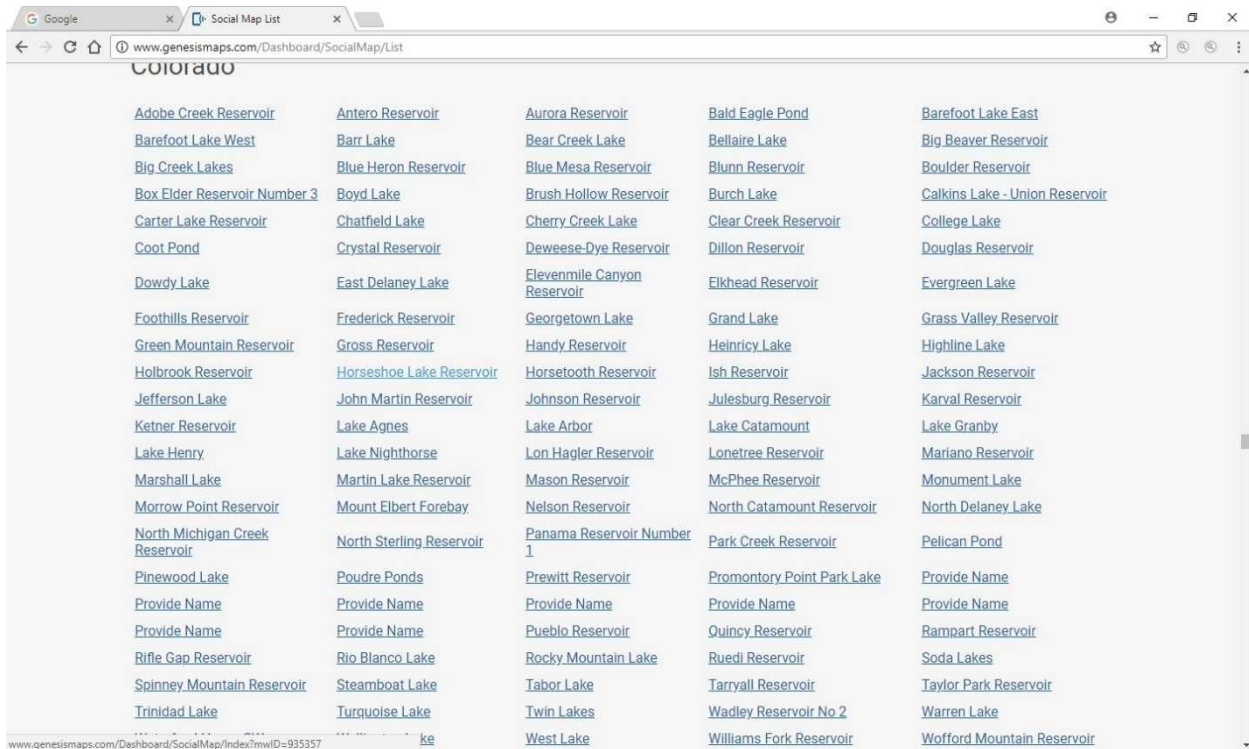
Now that this is set up you can go look for maps of your favorite lake. On your login screen it says "SOCIAL MAP LIST."



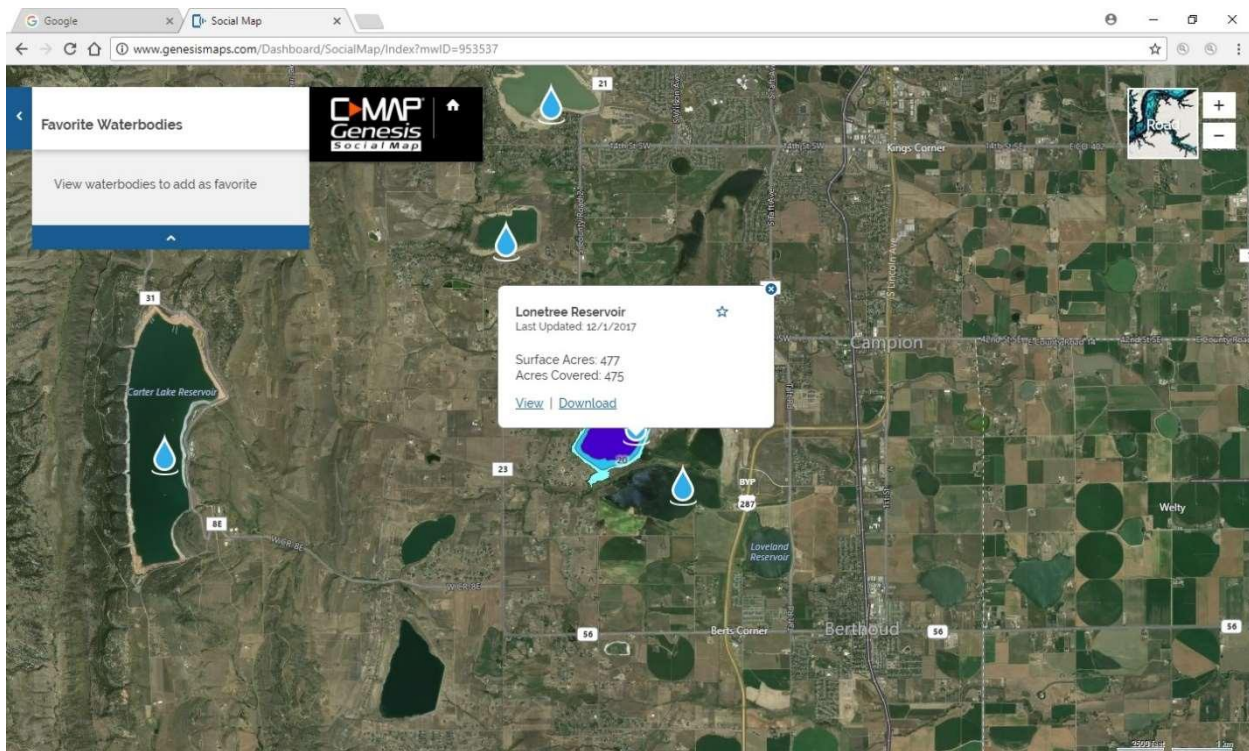
The screenshot shows the Genesis Maps dashboard. At the top, there is a navigation bar with the Genesis logo and links for Social Map, Features, Pricing, News & Events, How It Works, Log Off, Dashboard, and Account. Below the navigation bar, there is a "START UPLOAD" button. The main content area is divided into two columns. The left column features a "Social Map" section with a "SOCIAL MAP LIST" link and a map showing a lake system with a blue circle containing a white plus sign. The right column contains two sections: "Trips" and "Plotters". The "Trips" section has tabs for "My Uploads", "My Merges", and "Promo Uploads", and a table with columns "WATERBODY", "LAST TRIP", and "NO.". The "Plotters" section has an "ADD DEVICE" button and a table with columns "NAME", "MODEL", and "View".

NAME	MODEL	View
George	Lowrance HDS3	View
george 7	Lowrance HDS3	View
George new 9	Lowrance HDS3	View

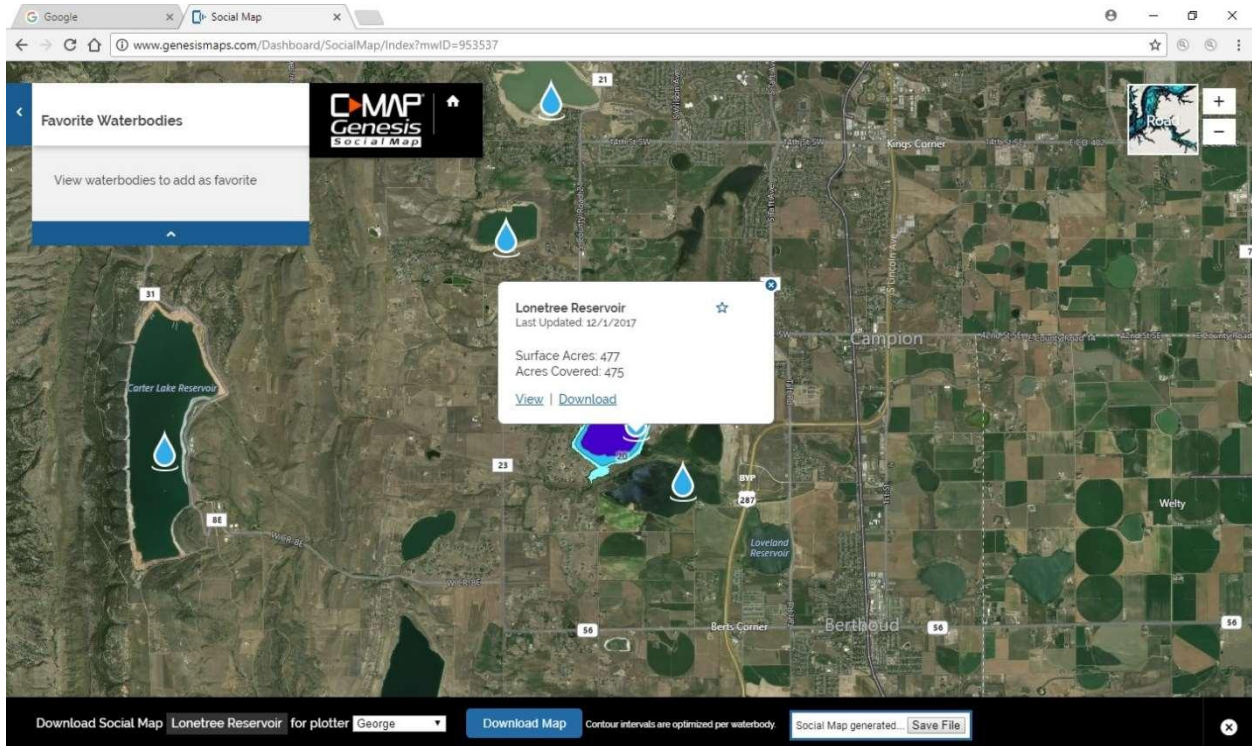
When you click on "SOCIAL MAP LIST" you will get a list of thousands of lakes around the world. You can scroll down to United States and then to your state to find the list of lakes that have map data. You can also use the search box to type in the name of your lake.



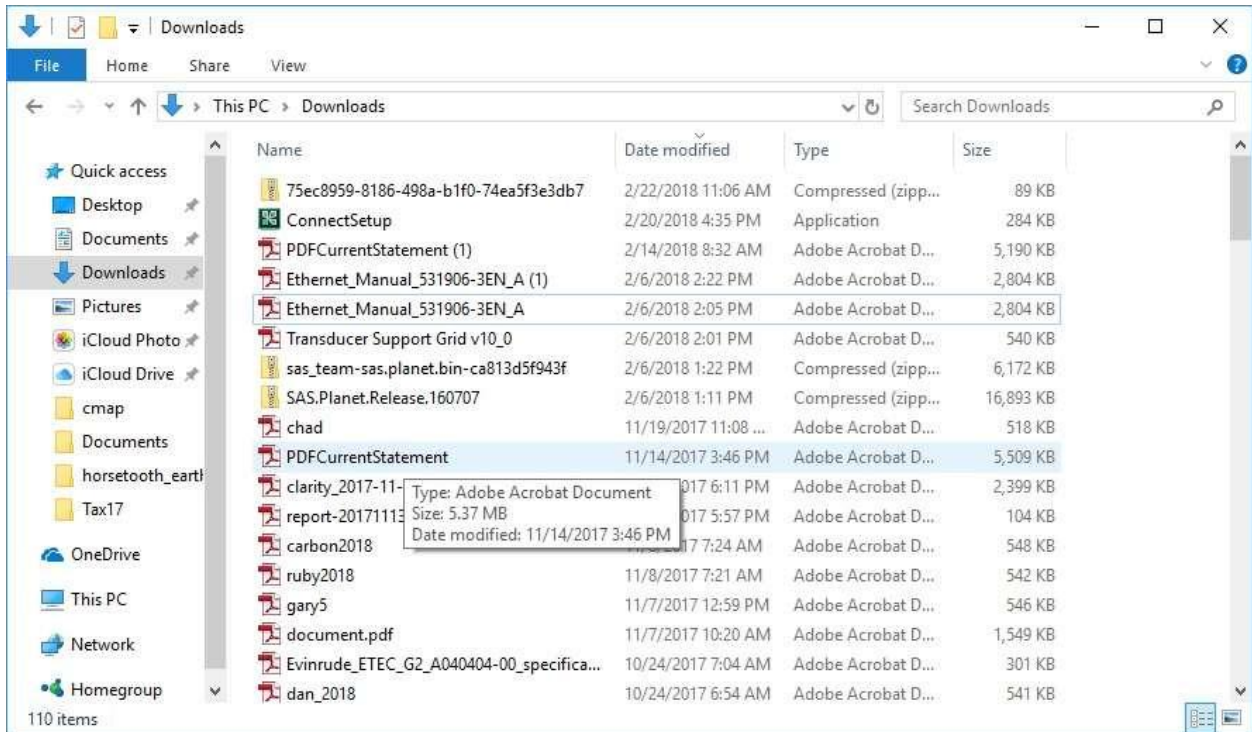
Click on the lake you want to view or download. It will bring up the screen shown below



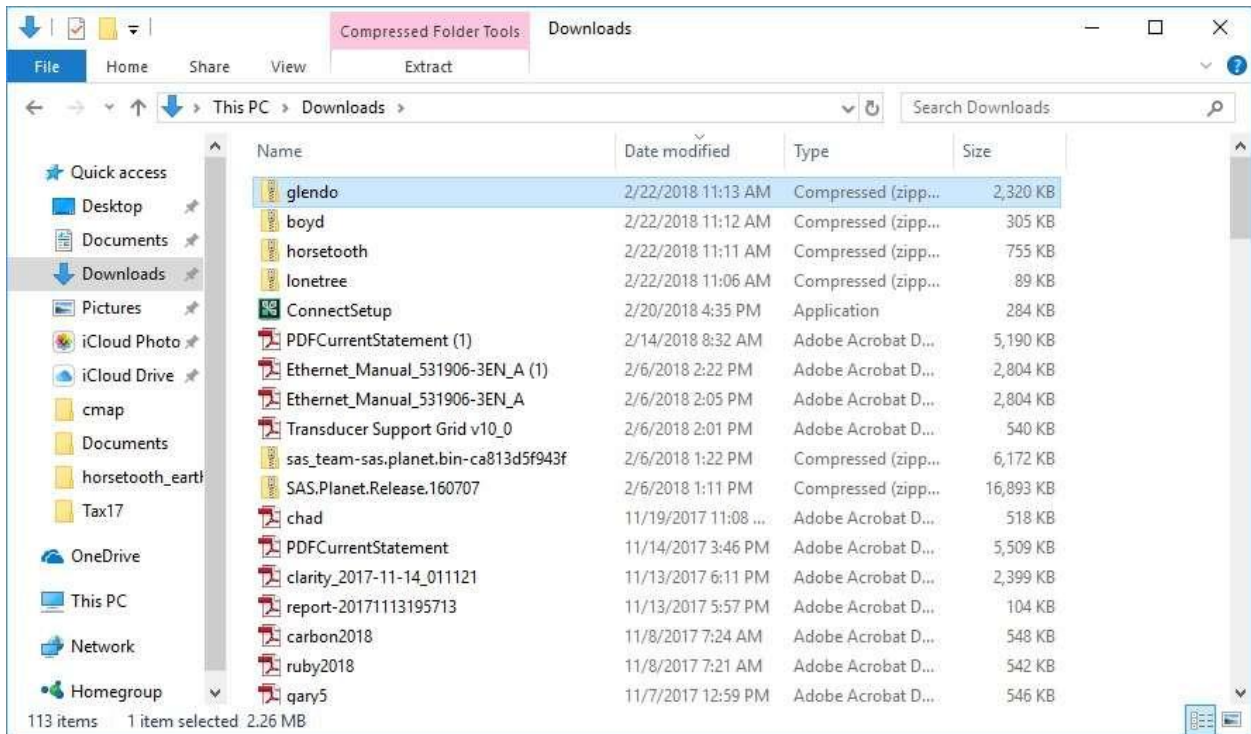
Click on “Download.” Select the plotter you want to use for your map, click on “Download” at the bottom of the screen and click on “Save File.”



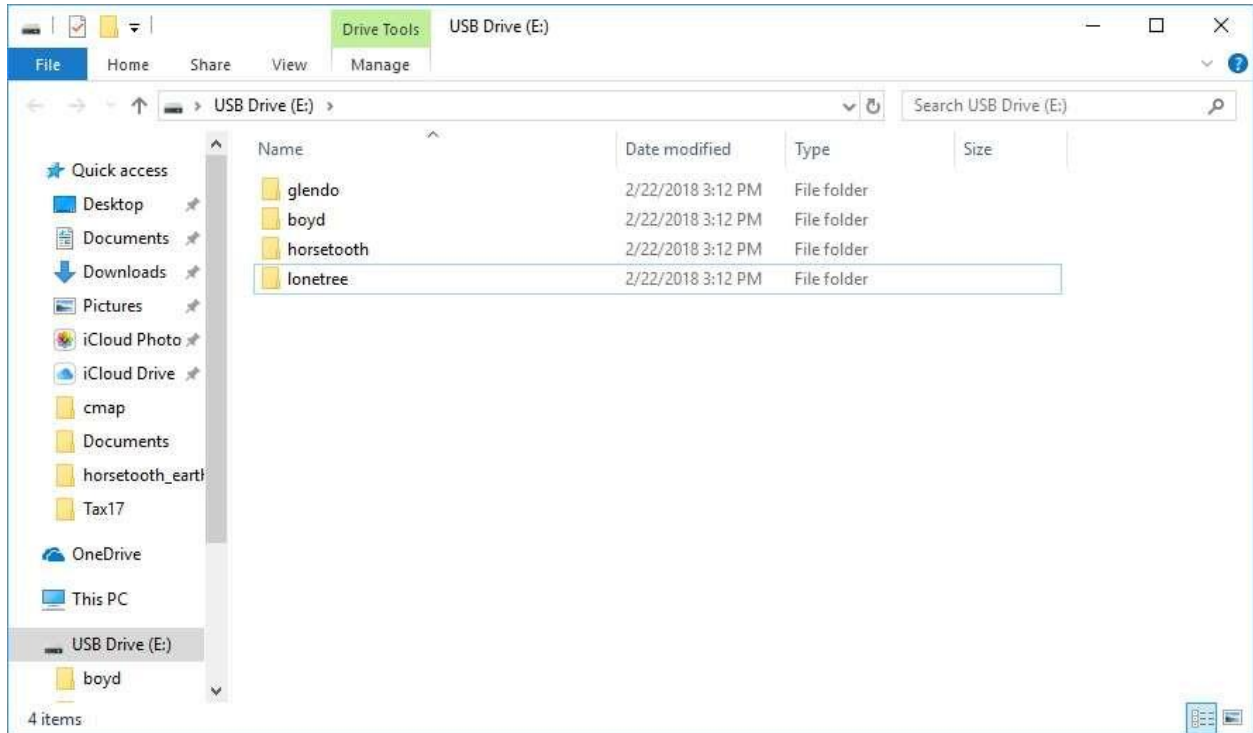
Once the map is saved it will appear wherever your download go on your computer. For Windows 10 this is the Download Folder. If you select that folder it will look something like this.



The file at the top of the folder, with the long cryptic name is your map. At this point I rename the map to something that makes sense to me. Below I show several maps that I downloaded and renamed.

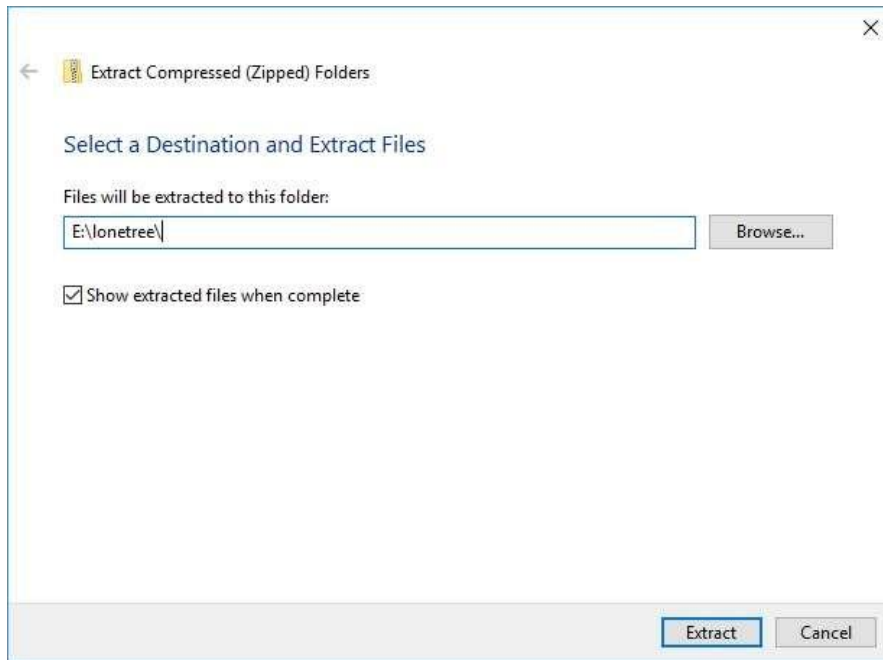


Now get an SD card of the format that works in your Lowrance. The newer models use microSD cards. Insert in an SD card reader slot on your computer if you have one or get a USB to SD card adaptor. Create a file folder on your SD card for every lake you have downloaded to your computer. The SD card folder should look something like this.

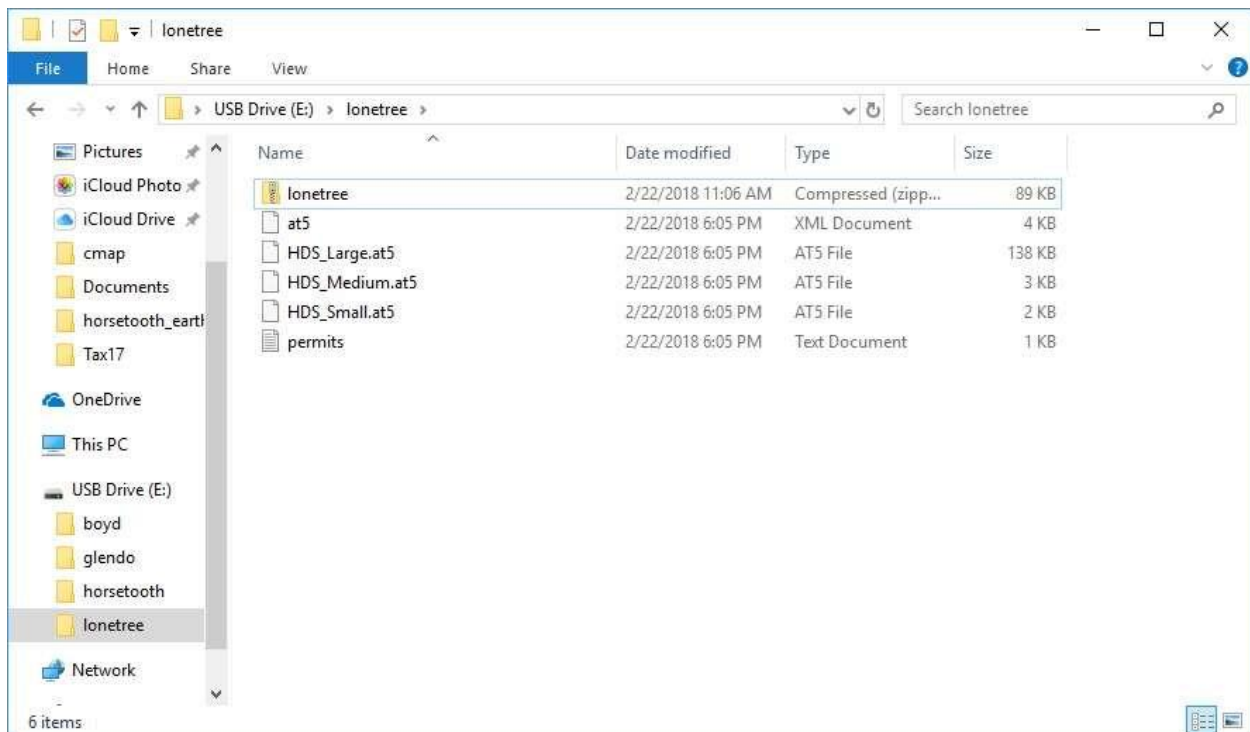


Copy your maps from your download folder to the respective folder on your SD card. Select the folder of one of the lakes you downloaded. Your map file should be in there.

Right click on the map file and select "Extract All." Change the destination to be the same as your map folder for that lake.

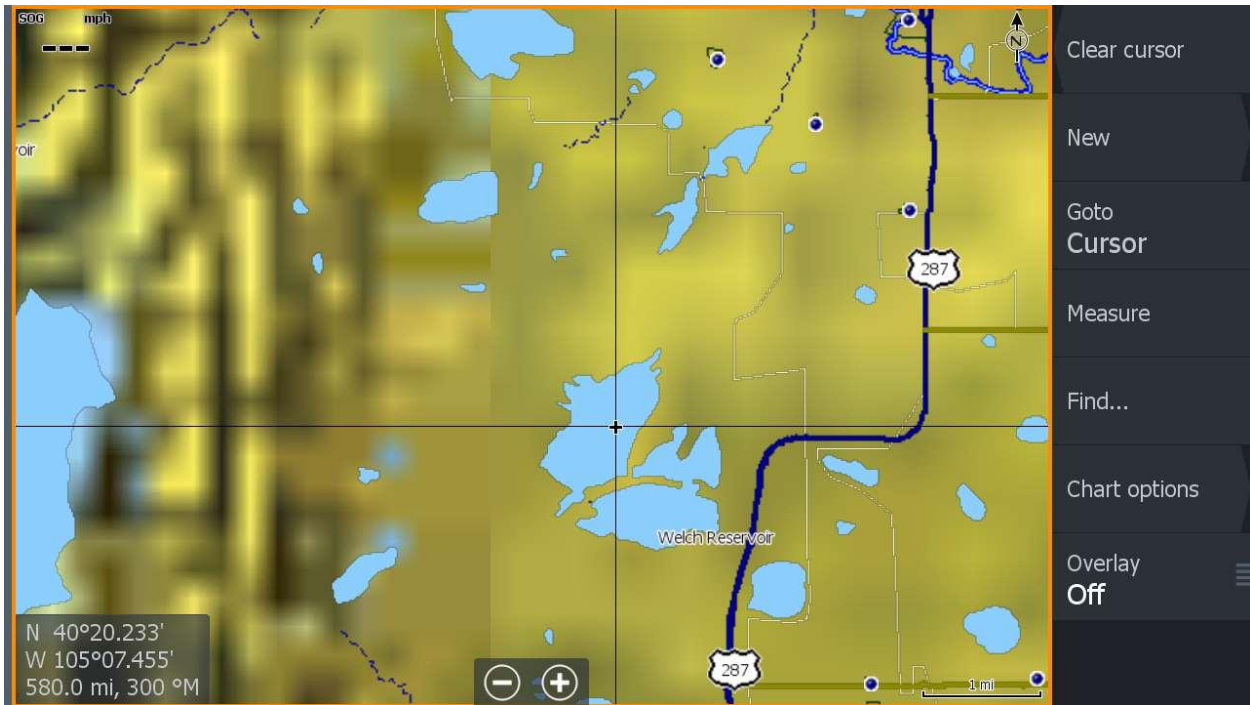


When the extract is done your map folder will look like this. The first file is your downloaded map. The rest are the actual map files your Lowrance needs.

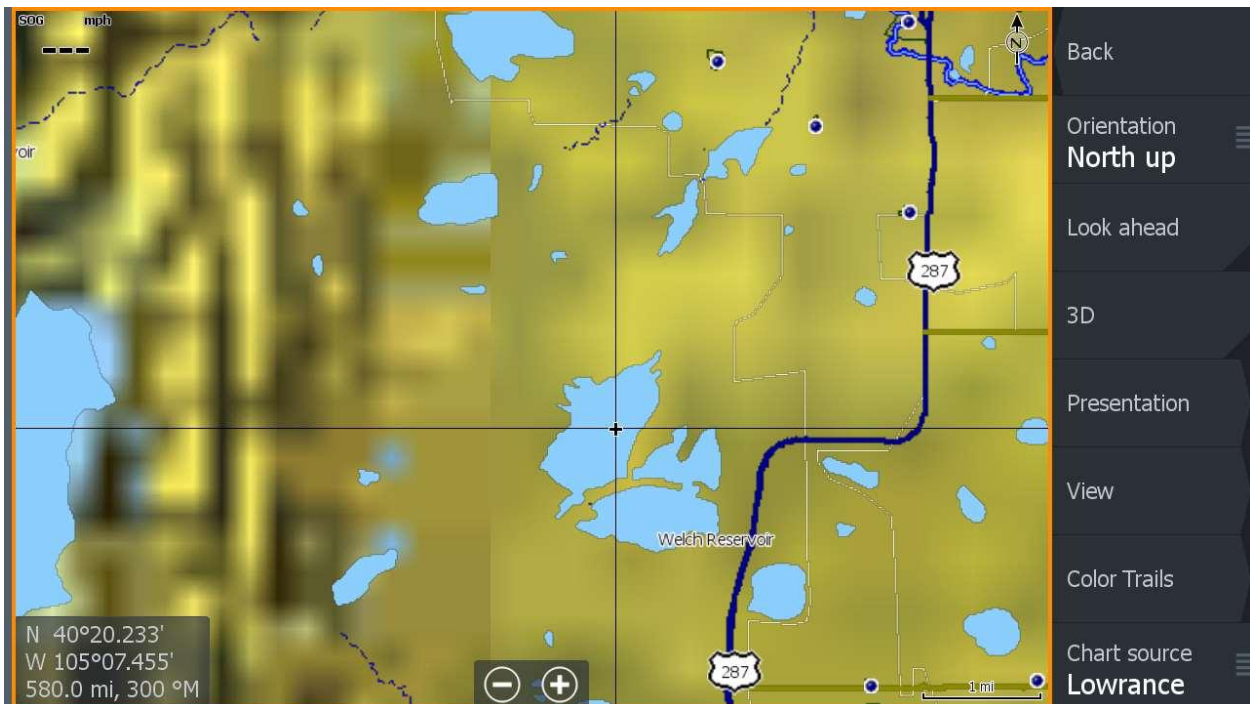


View your Map on your Lowrance

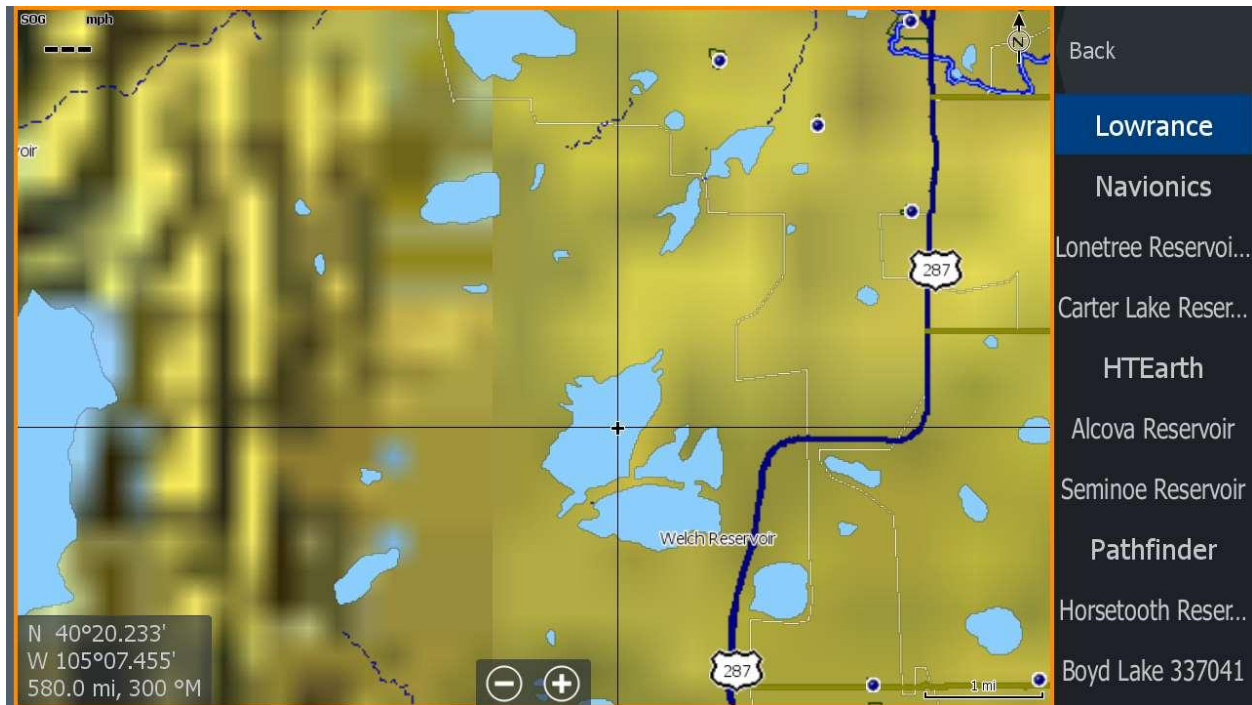
Eject the memory card from your computer and insert into your Lowrance. Turn the unit on. If you are doing this at home you can move your cursor to the lake you want to see. Select "Chart options." (If you are using a Hook or Elite to do this your chart options will be under settings-chart rather than like shown.)



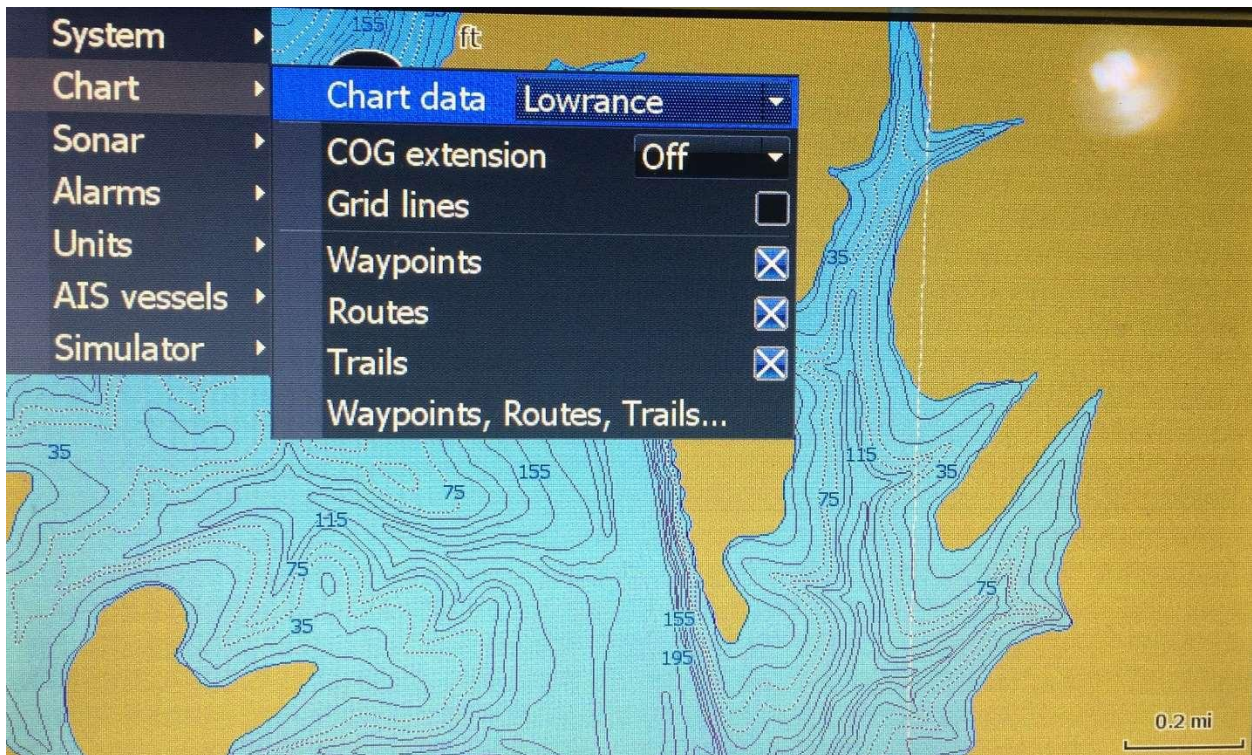
Next, select "Chart source"

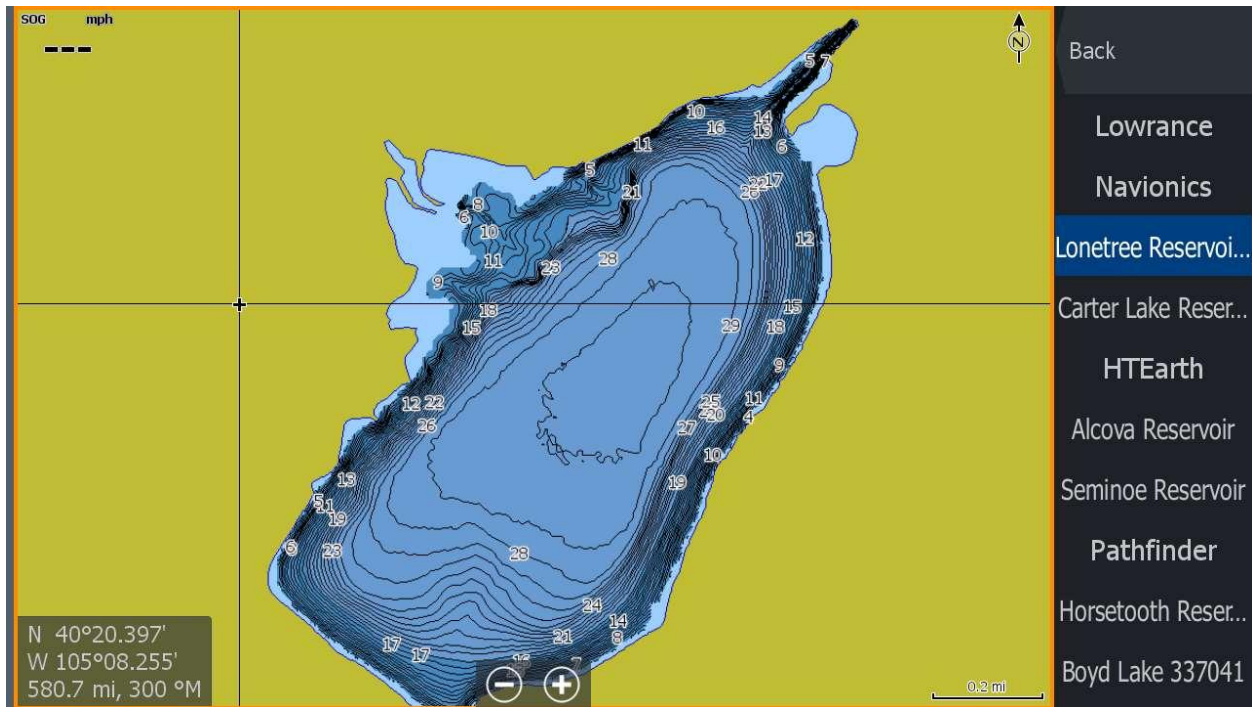


A list of map choices will appear. Select the map you want from the list.



On Hook and Elite HDI and CHIRP it will look like this (menu-settings-chart-chart data). A drop down list of maps on the card shows when you select chart data.





You will get 1 foot contours if you zoom in to an area.

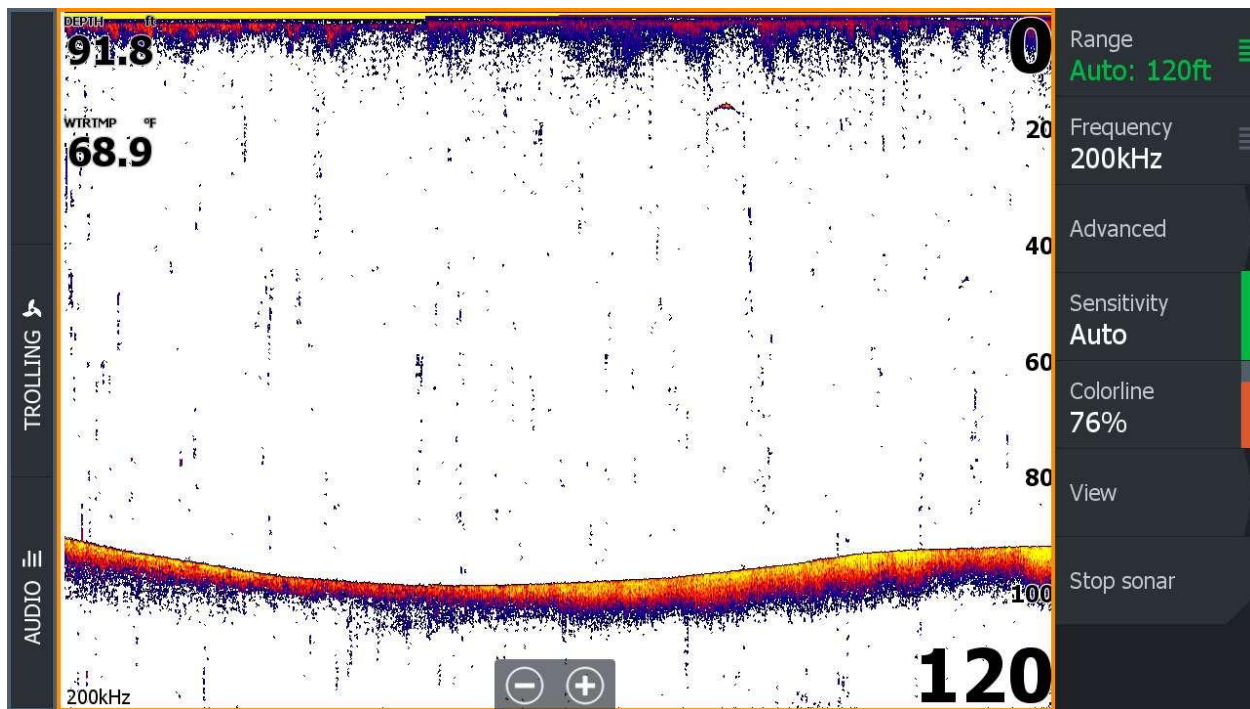
If you want to look at a different map select “Lowrance” for your map choice and use your cursor to move around to another lake. Then select the lake you want.

Of course when you are on the water you don’t need to move a cursor around to see the lake you are already on. Just select the lake.

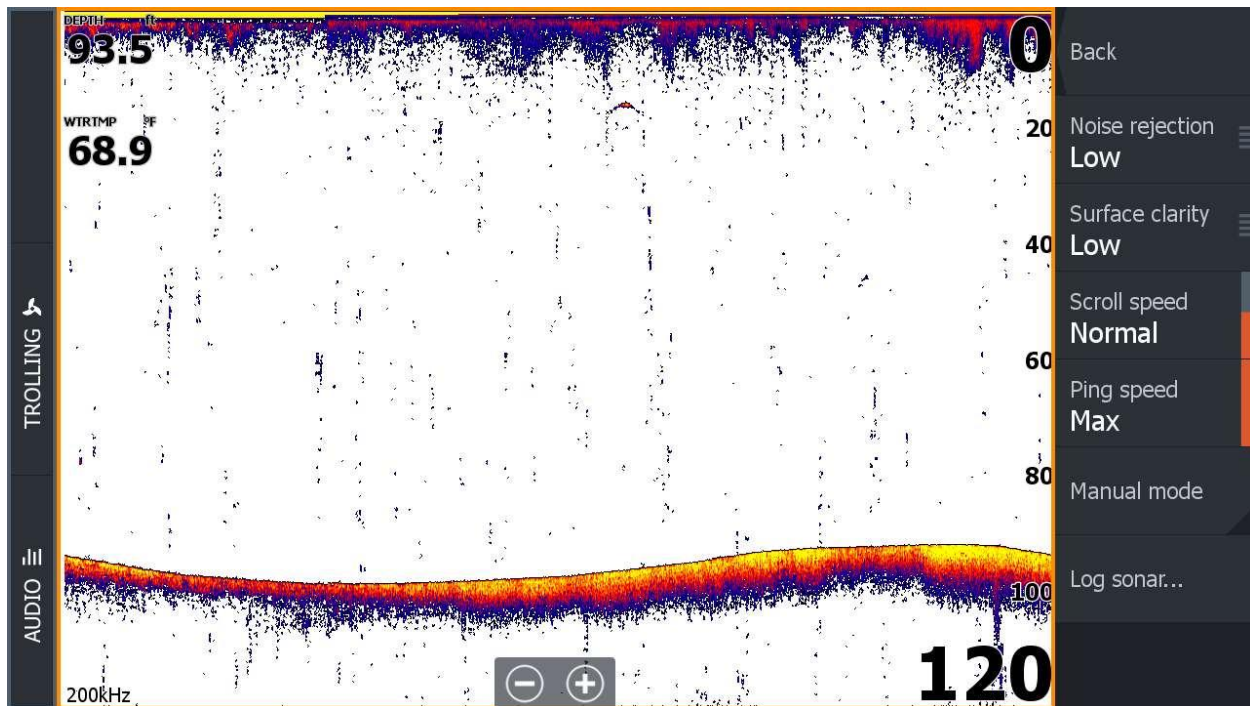
Recording and Uploading to Improve Social Maps

Many lakes are not complete. These can be improved by recording data while you are fishing and uploading to CMAP Genesis when you get home.

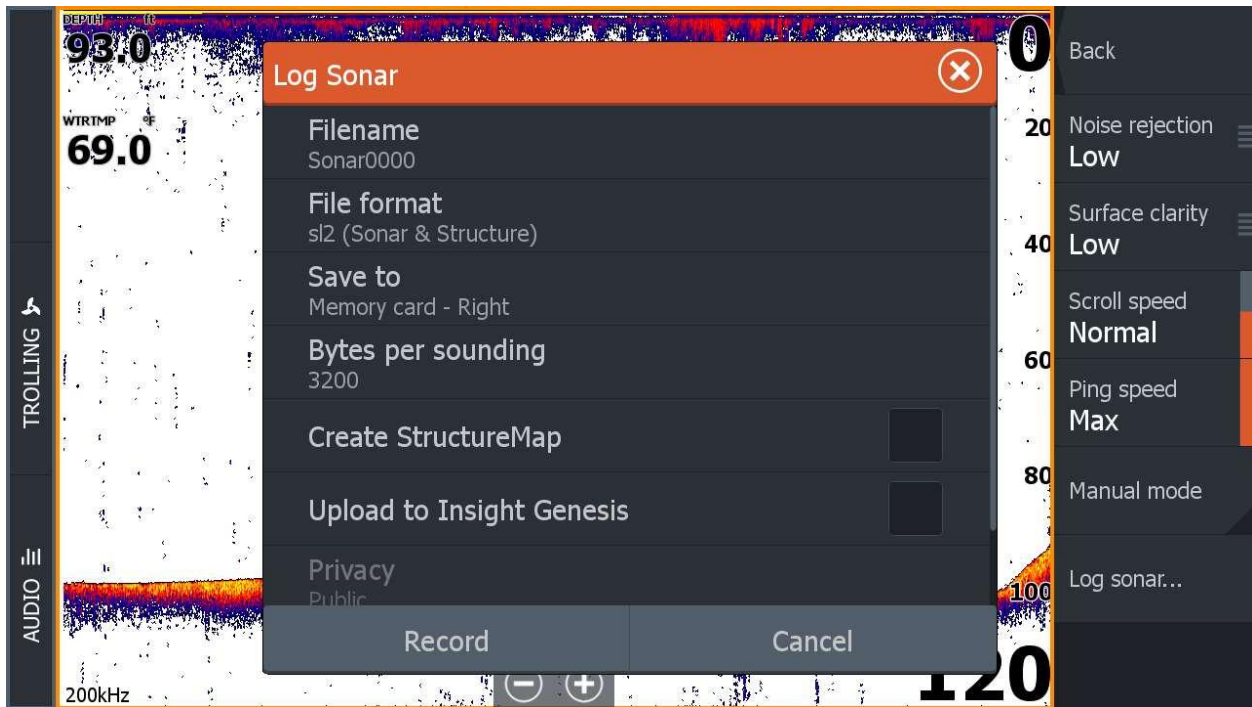
Insert an SD card into your Lowrance. You can use the same one that has your maps on it. Turn the unit on when on the water. The menu looks like this.



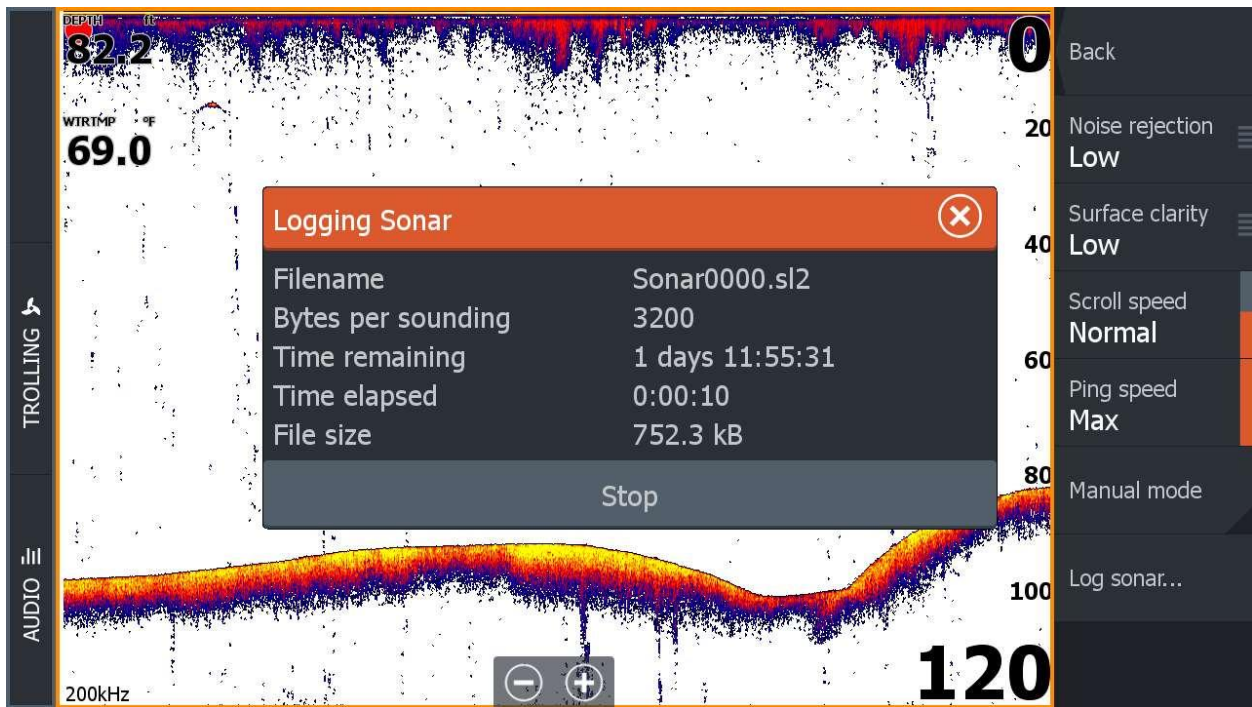
Select "Advanced"



Select "Log sonar." A window pops up. You can change the file name if you want or select where to save your log file (Don't save to internal). Press record. The popup screen will go away and you will see a blinking red dot in the upper left corner of your sonar screen. You should be able to record 3-4 hours of data in one file. It will stop recording when full. Just start another one if this happens.



When you are done recording. Select "Advanced" once again from your sonar menu, press "Log sonar" and press "Stop"

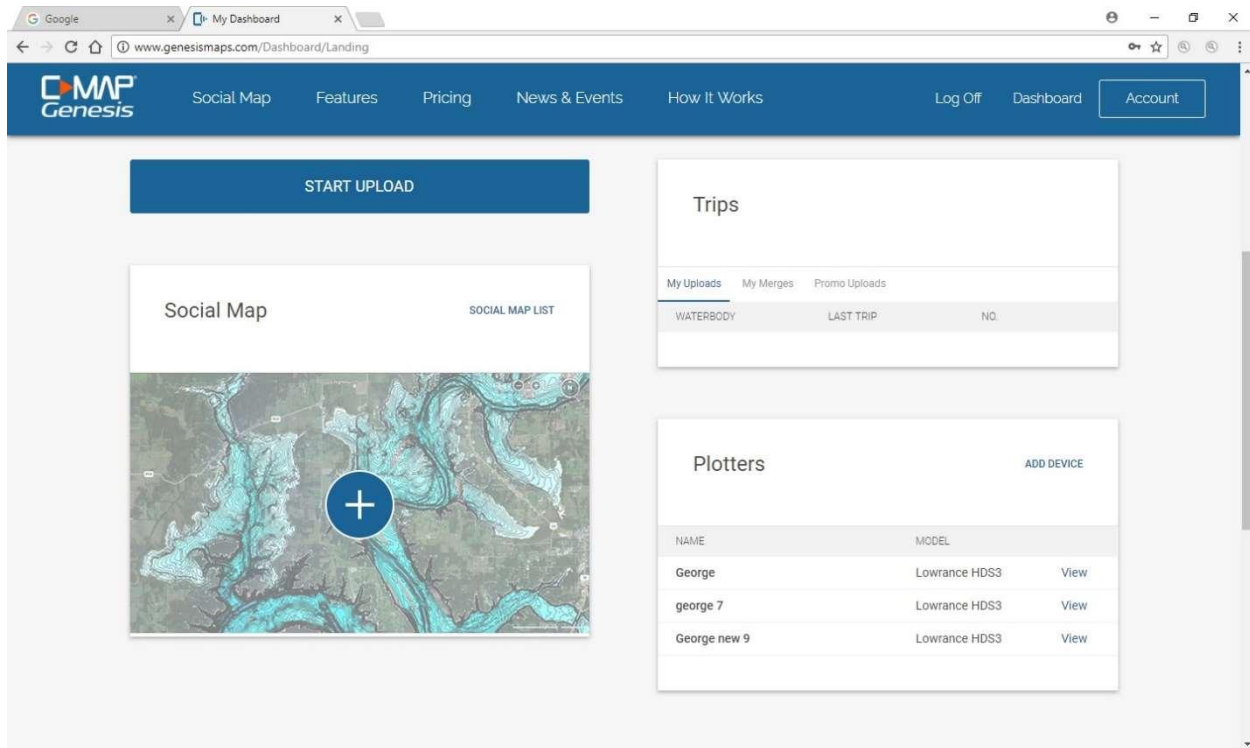


Uploading your Recording to CMAP Genesis

Remove the SD card from your Lowrance. Put it in the SD card reader built in to your computer or your USB to SD card adaptor.

Create a folder on your computer where you want to keep your log files. Copy the log files from your SD card to that folder.

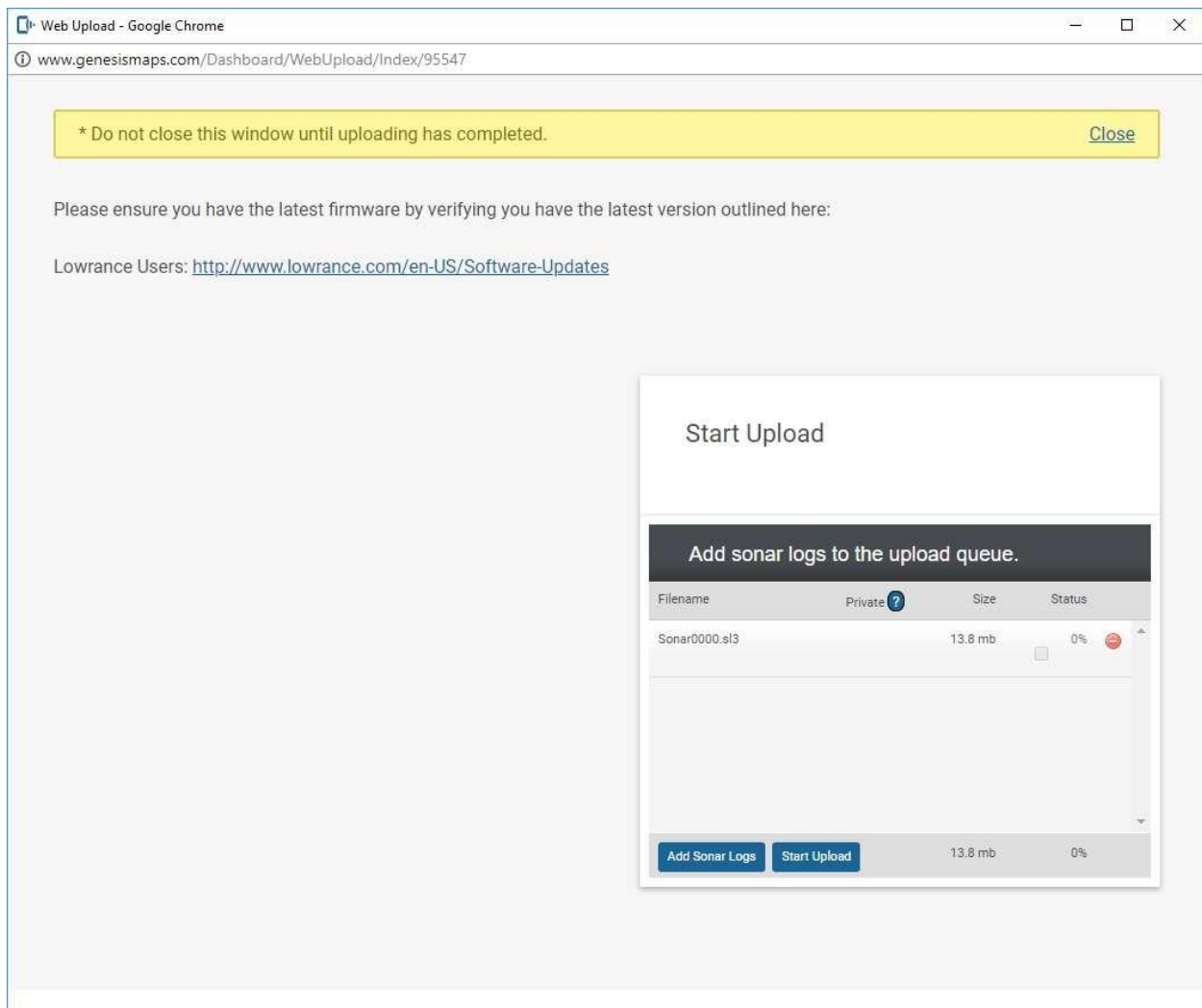
Log in to your CMAP Genesis account (www.genesismaps.com).



The screenshot shows the CMAP Genesis dashboard. At the top, there is a navigation bar with the CMAP Genesis logo and links for Social Map, Features, Pricing, News & Events, How It Works, Log Off, Dashboard, and Account. Below the navigation bar, there is a large blue button labeled 'START UPLOAD'. To the left of the 'START UPLOAD' button is a 'Social Map' section with a map and a 'SOCIAL MAP LIST' link. To the right of the 'START UPLOAD' button is a 'Trips' section with tabs for 'My Uploads', 'My Merges', and 'Promo Uploads'. Below the 'Trips' section is a 'Plotters' section with an 'ADD DEVICE' link and a table of plotters.

NAME	MODEL	
George	Lowrance HDS3	View
george 7	Lowrance HDS3	View
George new 9	Lowrance HDS3	View

From this screen select "START UPLOAD"



Add as many sonar logs as you want and select “Start Upload.” Don’t close this window until the status shows they are complete. CMAP will process your uploads and add them to the social map.

The lake map will continue to improve as people add their recordings. When you are preparing to go to the lake check to see if there have been any improvements to the map. Repeat the download process from above to get the latest map.

Good fishing!